



# RAFVÖRUR ehf

Dalvegi 16c. 201 Kópavogur Kt:470987-1119 S: 568-6411  
[rafvorur@rafvorur.is](mailto:rafvorur@rafvorur.is) [www.rafvorur.is](http://www.rafvorur.is) Stofnað 1975



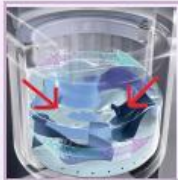
White-Westinghouse®

Always Carefree. Always Clean.

## Fabric Care - HE Laundry Center



The state of the art AdvanceTech Series High Efficiency laundry center is engineered for superior performance and optimal fabric care. Each program is designed and optimized for clothing and load type. Doing the laundry will be effortless with the AdvanceTechSeries High Efficiency Laundry Center



**Water Wave Wash Action**  
Water and detergent is gently spun and pulled through clothing for a more gentle, thorough cleaning. The dynamic wash action ensures that all clothes are completely immersed in water.



**Performance Fill**  
A strong stream of water and rotating drum efficiently saturates all laundry before the wash program begins.



**The AdvanceCare Tub with Lifetime Warranty**  
A seamless tub designed to create a unique water action that gently immerses clothes for better cleaning performance. The lifetime warranty guarantees the recyclable wash tub for the life of the washer.



**Fresh Water Rinse**  
Final rinse uses fresh water to ensure whiter whites and reduce allergens left on clothing.



**Balanced Dry System**  
Large amounts of air are forced through the back of the dryer drum. This unique system of air flow results in safe, efficient drying.

### Features

- 10.1 kg Washer and Dryer Capacity
- High Efficiency Design
- Water Wave Wash Action
- Performance Fill
- 9 Wash Programs
- 5 Wash / Rinse Temperature Controls
- Fresh Water Rinse
- Hot and Cold Fill
- Bleach and Fabric Softener Dispensers
- Advanced Balance System
- AdvanceCare Tub with Lifetime Warranty
- Safety Lid Lock
- Balanced Dry System
- 6 Auto Dry Programs
- 3 Timed Dry Programs - 30, 60, 90 Minutes
- 4 Temperature Options
- Vented Dryer
- End-of-Cycle Chime
- Air Dry Option
- Rear Self-Leveling Legs
- Available in White



Electrolux Major Appliances Intl  
10200 David Taylor Drive  
Charlotte, NC 28262 USA  
[www.white-westinghouse-intl.com](http://www.white-westinghouse-intl.com)  
White-Westinghouse is a registered trademark of  
Electrolux Home Products, Inc.

W13LC-MLCE10ZEMW-A

**WW Þvottavél & þurrkari 10,1kg. MLCE10ZEMW krónur 419.900.-**



# RAFVÖRUR ehf

Dalvegi 16c. 201 Kópavogur Kt:470987-1119 S: 568-6411  
[rafvorur@rafvorur.is](mailto:rafvorur@rafvorur.is) [www.rafvorur.is](http://www.rafvorur.is) Stofnað 1975



White-Westinghouse®

Always Carefree. Always Clean.

## Fabric Care - HE Laundry Center



<b>MODEL</b>	<b>MLCE10ZEMW</b>
Voltage, Hertz	220-240V 50/60Hz
<b>SYSTEM FEATURES</b>	
Plug Type	British
Color	White
Controls	Rotary Electronic
<b>WASHER FEATURES</b>	
Capacity (kg)	10.1
Tub Size (L/cu ft)	93 / 3.28
Wash Programs	9
Wash/Rinse Temperature Controls	5
Bleach Dispenser	Yes
Fabric Softener Dispenser	Yes
Safety Lid Lock	Yes
Attached Drain Hose	Yes
Attached Power Cord	No
Rear Self-Leveling Legs	Yes
<b>DRYER FEATURES</b>	
Drum Size (L/cu ft)	156 / 5.5
Watts	4300
Drying Programs	9
Timed Drying Programs	30, 60, 90
Temperature Options	4
End-of-Cycle Signal	Yes
Lint Filter	Yes
Approvals	CB, SASO (3 Star)
<b>UNIT DIMENSIONS &amp; WEIGHT</b>	
Height (mm/in)	1930 / 76
Width (mm/in)	686 / 27
Depth (mm/in)	800 / 31.5
Weight (kg/lb)	113 / 250
<b>CARTON DIMENSIONS &amp; WEIGHT</b>	
Height (mm/in)	2032 / 80
Width (mm/in)	737 / 29
Depth (mm/in)	845 / 33.25
Weight (kg/lb)	125 / 275
Container Loading (20"/40"/40"HC)	18 / 42 / 42

Electrolux Major Appliances Intl  
10200 David Taylor Drive  
Charlotte, NC 28262 USA  
[www.white-westinghouse-intl.com](http://www.white-westinghouse-intl.com)  
White-Westinghouse is a registered trademark of  
Electrolux Home Products, Inc.

W13LC-MLCE10ZEMW-A

**WW Þvottavél & þurrkari 10,1kg. MLCE10ZEMW krónur 419.900.-**